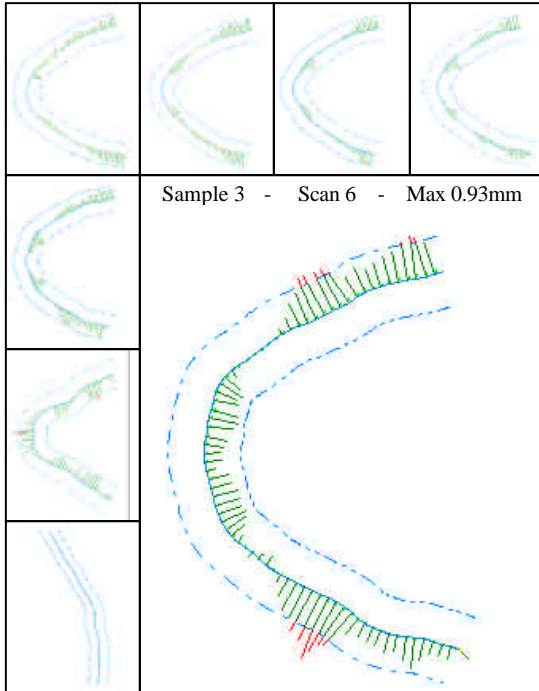
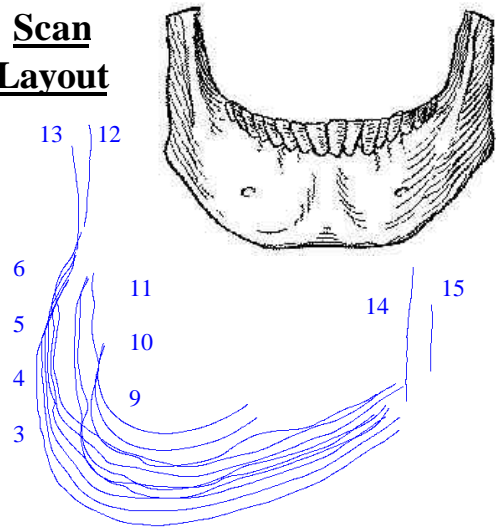
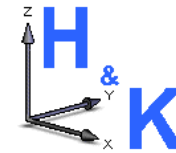


**Scan  
Layout**



To determine the accuracy of skeletal molds, models were compared to the actual skeleton.



**H&K MFG LLC**

N78 W14573 Appleton Ave. #195  
Menomonee Falls, WI 53051  
Phone: 262-627-0649  
Fax: 262-250-0135

[www.hk-mfgnet.com](http://www.hk-mfgnet.com)

**PROGRAMMING, DESIGN  
INSPECTION SOLUTIONS**

[www.hk-mfgnet.com](http://www.hk-mfgnet.com)

# Quality

# Cost

# Solutions

**WHEN YOU CALL** H&K you will have access to more than simple services - you will have a partner dedicated to providing timely, cost effective solutions in full confidentiality.

**THE FOUNDATION** of our products begins with a thorough understanding of CMM design and capabilities. From this we have developed both methods and accessory products which are innovative in their design.

**PLEASE VISIT** our web site for more details about H&K, or call us direct. We are ready to listen.

## Services

- **Programming**
  - CMM Part Programming
  - Legacy Conversion
  - Machine Communication and Data Exchange
  - Statistical Analysis
- **Design and Fabricate**
  - CAD/CAM
  - CMM Fixturing
  - Machine Tool Fixturing
  - Automation Systems
- **Consulting**
  - CMM Software Training
  - Gaging Systems
  - Inspection Methodology
  - PPAP / Gage R&R
  - Machine Capability Studies
  - Geometric Dimensioning and Tolerancing (GD&T)

## Products

### Machine Verification Gage



### CMM Shuttles



### CMM Utility Set Software

